

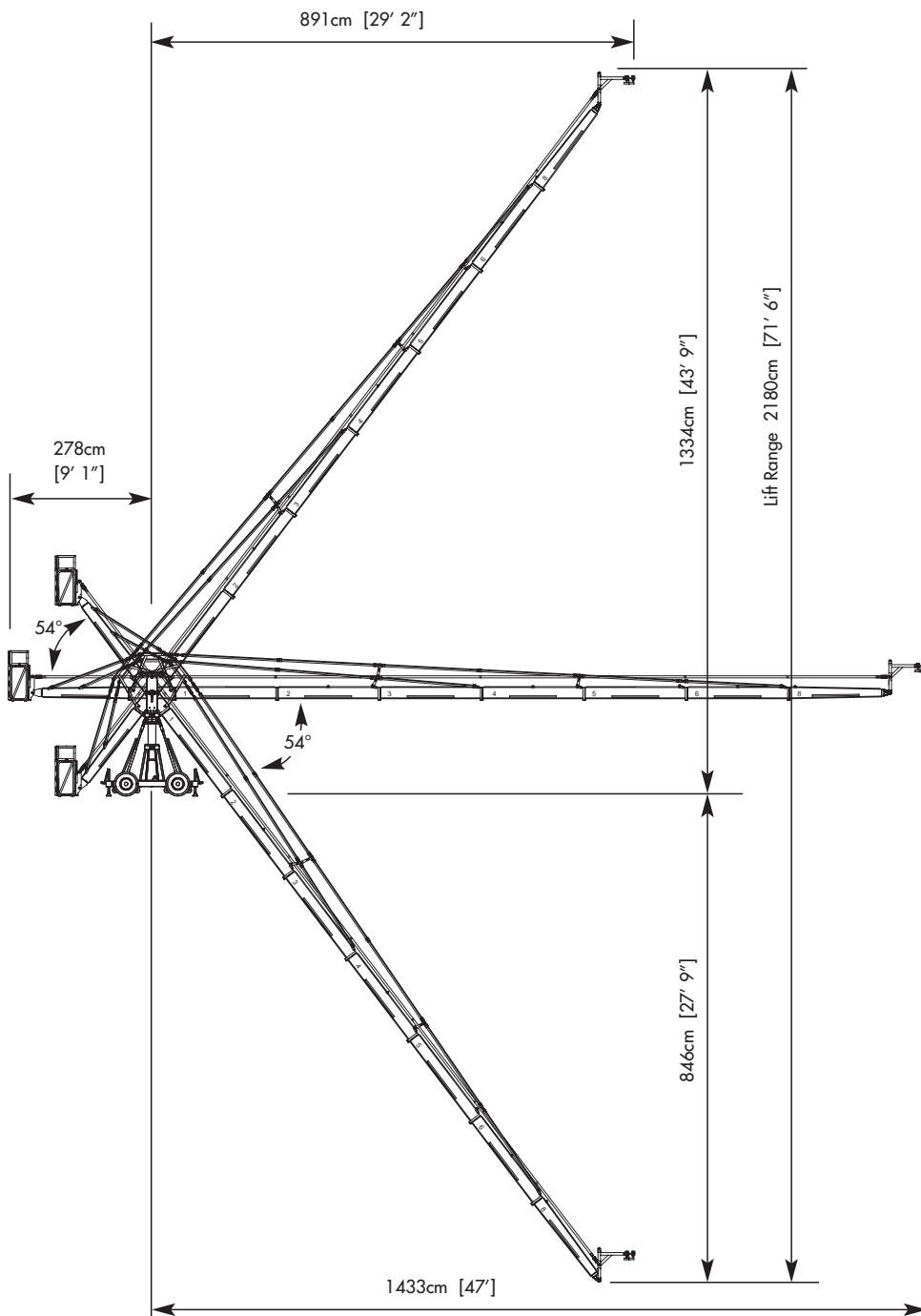
GF-14 CAMERA CRANE SYSTEM

ARRI[®]
MEDIA GRIP

A MODULAR, RIDEABLE, REMOTE CRANE FROM **ARRI MEDIA GRIP**

The GF-14 is a state-of-the-art crane system that addresses the demands of the operator while giving the DoP an amazing range of flexibility.

- Set-up is quick and easy
- 11 configurations can be achieved with the modular design
- The base dolly has independent, double ended steering providing excellent manoeuvrability
- The crane has a low pivot height, making transportation and set-up easier



SPECIFICATIONS

Max Remote Height

1334cm 43' 9"

Max Platform Height (2 man)

895cm 29' 4"

Max Platform Height (1 man)

1053cm 34' 6"

Base Width

140cm 4' 6"

Base Length

148cm 4' 9"

Base Weight

400kg 880lbs

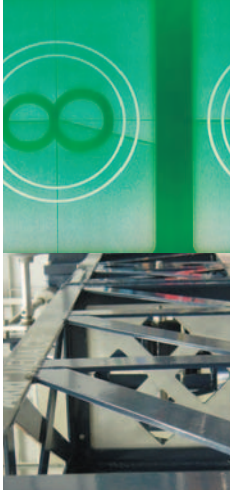
Total Weight

2055kg 4521lbs

Max Wind Speed

15.6mph 25km/h

GF-14 CAMERA CRANE SYSTEM



Version	Extension arm required (front)	Max platform height	Max 3-way remote height	Arm reach pivot to cam	Reach at full height	Pivot to rear	Lift capacity	Counterweight required for maximum load	Counterweight required to balance empty arm	Crane weight excluding weights	Mode
Version 1	1 x 200cm / 6' 6"	423cm / 13' 10"	453cm / 14' 10"	336cm / 11'	232cm / 7' 7"	278cm / 9' 1"	250kg / 550lbs	274kg / 602lbs	81kg / 17lbs	603kg / 1326lbs	2 Man
Version 2	1 x 200cm / 6' 6" + 1 x 100cm / 3' 3"	502cm / 16' 5"	532cm / 17' 5"	434cm / 14' 2"	291cm / 9' 6"	278cm / 9' 1"	250kg / 550lbs	424kg / 932lbs	36kg / 79lbs	620kg / 1364lbs	2 Man
Version 3	2 x 200cm / 6' 6"	581cm / 19'	611cm / 20'	534cm / 17' 6"	352cm / 11' 6"	278cm / 9' 1"	250kg / 550lbs	554kg / 1218lbs	56kg / 123lbs	672kg / 1478lbs	2 Man
Version 4	2 x 200cm / 6' 6" + 1 x 100cm / 3' 3"	658cm / 21' 7"	688cm / 22' 7"	631cm / 20' 8"	411cm / 13' 5"	278cm / 9' 1"	250kg / 550lbs	718kg / 1579lbs	112kg / 246lbs	692kg / 1522lbs	2 Man
Version 5	3 x 200cm / 6' 6"	738cm / 24' 2"	768cm / 25' 2"	731cm / 23' 11"	472cm / 15' 5"	278cm / 9' 1"	250kg / 550lbs	896kg / 1971lbs	182kg / 400lbs	711kg / 1564lbs	2 Man
Version 6	3 x 200cm / 6' 6" + 1 x 100cm / 3' 3"	816cm / 26' 9"	846cm / 27' 9"	829cm / 27' 2"	531cm / 17' 5"	278cm / 9' 1"	250kg / 550lbs	1078kg / 2371lbs	266kg / 585lbs	748kg / 1645lbs	2 Man
Version 7	4 x 200cm / 6' 6"	895cm / 29' 4"	925cm / 30' 4"	929cm / 30' 5"	591cm / 19' 4"	278cm / 9' 1"	250kg / 550lbs	1274kg / 2802lbs	372kg / 818lbs	783kg / 1722lbs	2 Man
Version 8	4 x 200cm / 6' 6" + 1 x 100cm / 3' 3"	973cm / 31' 11"	1003cm / 32' 11"	1027cm / 33' 8"	651cm / 21' 4"	278cm / 9' 1"	140kg / 308lbs	1022kg / 2248lbs	448kg / 985lbs	787kg / 1731lbs	1 Man
Version 9	5 x 200cm / 6' 6"	1053cm / 34' 6"	1083cm / 35' 6"	1127cm / 36' 11"	711cm / 23' 3"	278cm / 9' 1"	140kg / 308lbs	1148kg / 2525lbs	554kg / 1218lbs	818kg / 1799lbs	1 Man
Version 10	5 x 200cm / 6' 6" + 1 x 150cm / 5'	-	1177cm / 38' 7"	1236cm / 40' 6"	772cm / 25' 3"	278cm / 9' 1"	85kg / 187lbs	974kg / 2142lbs	518kg / 1139lbs	788kg / 1733lbs	Remote
Version 11	6 x 200cm / 6' 6" + 1 x 150cm / 5'	-	1334cm / 43' 9"	1433cm / 47'	891cm / 29' 2"	278cm / 9' 1"	60kg / 132lbs	1218kg / 2679lbs	722kg / 1588lbs	837kg / 1841lbs	Remote

Base dimensions: 140cm x 148cm (4' 6" x 4' 9") Weight: 400kg (880lbs)

Height to top of pivotal section when retracted: 192cm (6' 3") without rigging harness; 245cm (8' 1") with rigging harness

Reach from pivotal section to front of ground wheel: 73cm (2' 4")

Height to top of pivotal section when extended: 212cm (6' 11") without rigging harness; 265cm (8' 8") with rigging harness

NB. The figures detailed do not incorporate shipping weights

For more information on the GF-14
or to arrange a demonstration call **01895 457100**

