

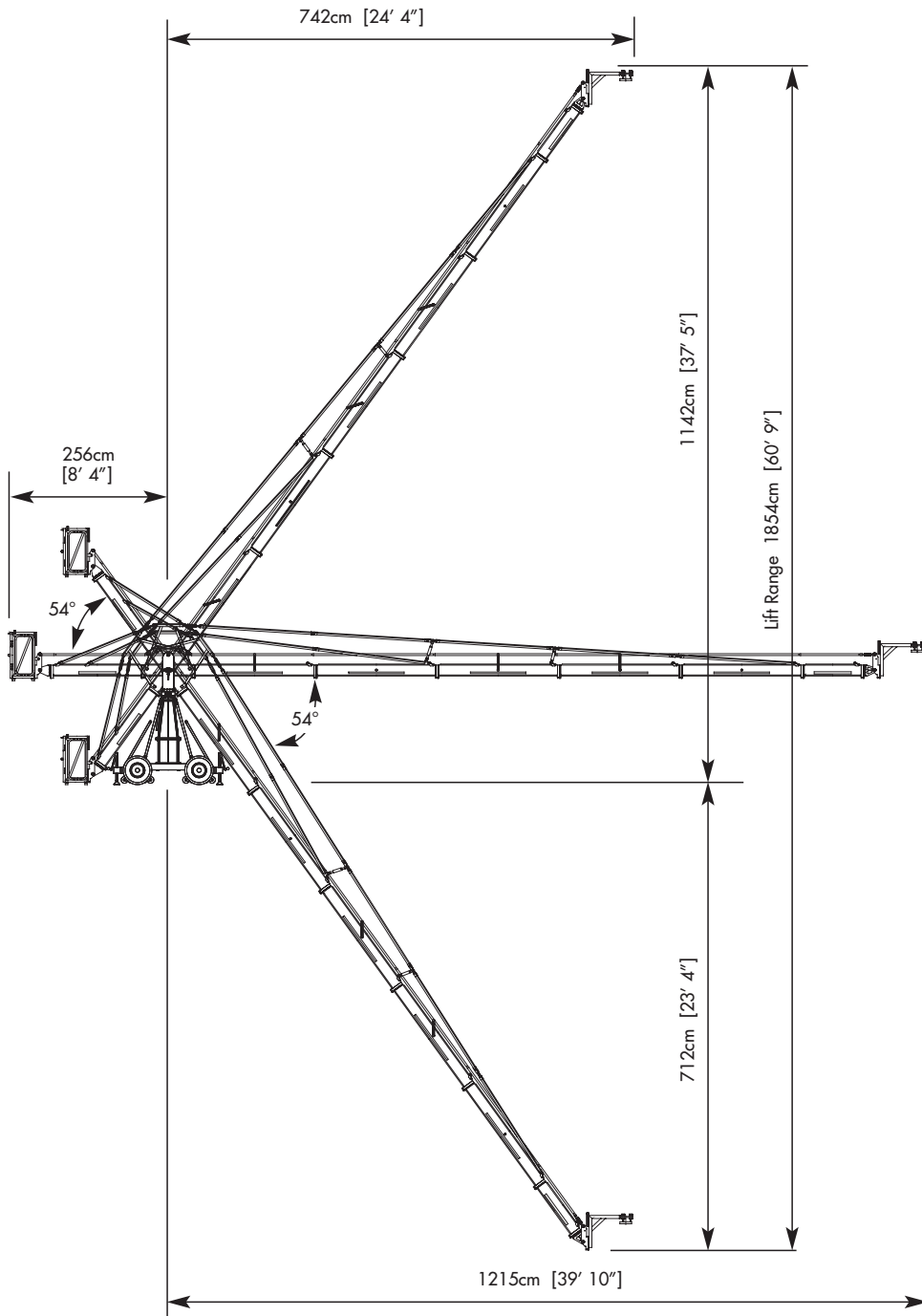
GF-10 CAMERA CRANE SYSTEM

ARRI[®]
MEDIA GRIP

A MODULAR, RIDEABLE, REMOTE CRANE FROM **ARRI MEDIA GRIP**

The versatile features of the GF-10 allow you to cover any crane shot, from a confined indoor set to a high open air perspective.

- Set-up is quick and easy
- 19 configurations can be achieved with the modular design
- The mounting column splits allowing lower pivot height
- The base dolly fits on 1m track and breaks down to a mini tracking dolly for 62cm



Measurements shown for version 10

SPECIFICATIONS

Max Remote Height

1142cm 37' 5"

Max Platform Height (2 man)

726cm 23' 9"

Max Platform Height (1 man)

805cm 26' 4"

Base Width

144cm 4' 7"

Base Length

162cm 5' 3"

Base Weight

281kg 619lbs

Total Weight

1371kg 3016lbs

Max. Wind Speed

22mph 35km/h



GF-10 CAMERA CRANE SYSTEM



Version	Extension arm required	Max height to euro adaptor	Max 4-way remote height	Arm reach pivot to cam	Reach at full height	Pivot to rear	Lift capacity	Counterweight required for maximum load	Crane weight excluding weights	Mode
1	1 x Long	407cm/13' 4"	424cm/13' 11"	323cm/10' 7"	217cm/7' 2"	256cm/8' 4"	250kg/550lbs	316kg/695lbs	425kg/935lbs	2 Man
2	1 x Long, 1 x Short	486cm/15' 11"	503cm/16' 6"	420cm/13' 9"	274cm/8' 11"	256cm/8' 4"	250kg/550lbs	480kg/1003lbs	454kg/998lbs	2 man
3	2 x Long	567cm/18' 7"	584cm/19' 2"	521cm/17' 1"	333cm/10' 11"	256cm/8' 4"	250kg/550lbs	634kg/1394lbs	467kg/1027lbs	2 Man
4	2 x Long, 1 x Short	646cm/21' 2"	663cm/21' 9"	618cm/20' 3"	390cm/12' 9"	256cm/8' 4"	250kg/550lbs	820kg/1804lbs	481kg/1058lbs	1 Man
5	3 x Long	726cm/23' 9"	743cm/24' 5"	718cm/23' 6"	449cm/14' 9"	256cm/8' 4"	200kg/440lbs	826kg/1817lbs	504kg/1108lbs	1 Man
6	3 x Long, 1 x Short	805cm/26' 4"	822cm/26' 11"	816cm/26' 9"	507cm/16' 8"	256cm/8' 4"	156kg/343lbs	832kg/1830lbs	521kg/1146lbs	1 Man
7	4 x Long	.	890cm/29' 2"	920cm/30' 2"	569cm/18' 8"	256cm/8' 4"	100kg/220lbs	714kg/1570lbs	520kg/1144lbs	Remote
8	4 x Long, 1 x Short	.	969cm/31' 9"	1017cm/33' 4"	627cm/20' 7"	256cm/8' 4"	100kg/220lbs	792kg/1742lbs	544kg/1196lbs	Remote
9	5 x Long	.	1053cm/34' 6"	1117cm/36' 7"	685cm/22' 6"	256cm/8' 4"	75kg/165lbs	840kg/1848lbs	537kg/1181lbs	Remote
10	5 x Long, 1 x Short	.	1142cm/37' 5"	1215cm/39' 10"	743cm/24' 4"	256cm/8' 4"	50kg/110lbs	820kg/1804lbs	551kg/1212lbs	Remote
Tech specification of GF-10 system with 100cm section to weight bucket and split column, 62cm base										
1	1 x Long	367cm/12'	384cm/12' 7"	323cm/10' 7"	217cm/7' 2"	206cm/6' 9"	250kg/550lbs	400kg/880lbs	290kg/537lbs	2 Man
2	1 x Long, 1 x Short	.	463cm/15' 2"	420cm/13' 9"	274cm/8' 11"	206cm/6' 9"	250kg/550lbs	620kg/1364lbs	319kg/701lbs	2 Man
3	2 x Long	.	534cm/17' 6"	521cm/17' 1"	333cm/10' 11"	206cm/6' 9"	250kg/550lbs	812kg/1786lbs	332kg/729lbs	2 Man
4	2 x Long, 1 x Short	.	623cm/20' 5"	618cm/20' 3"	390cm/12' 9"	206cm/6' 9"	180kg/396lbs	823kg/1810lbs	336kg/738lbs	1 Man
5	3 x Long	.	703cm/23' 1"	718cm/23' 6"	449cm/14' 9"	206cm/6' 9"	130kg/286lbs	826kg/1817lbs	378kg/830	1 Man
6	3 x Long, 1 x Short	.	822cm/26' 11"	816cm/26' 9"	507cm/16' 8"	206cm/6' 9"	100kg/220lbs	820kg/1804lbs	392kg/861lbs	1 Man
Tech specification of GF-10 system with 50cm section to weight bucket and split column, 62cm base										
1a	1 x Long	367cm/12'	384cm/12' 7"	323cm/10' 7"	217cm/7' 2"	156cm/5' 1"	250kg/550lbs	600kg/1320lbs	285kg/626lbs	2 Man
2b	1 x Long, 1 x Short	.	463cm/15' 2"	420cm/13' 9"	274cm/8' 11"	156cm/5' 1"	140kg/308lbs	542kg/1192lbs	314kg/690lbs	1 Man
3c	2 x Long	.	557cm/18' 4"	521cm/17' 1"	333cm/10' 11"	156cm/5' 1"	100kg/220lbs	600kg/1320lbs	327kg/718lbs	Remote

Base dimensions: 144cm x 162cm (4' 7" x 5' 3") Weight: 281kg (619lbs)

Reach from pivotal section to front of ground wheel: 73cm (2' 4")

NB. The figures detailed do not incorporate shipping weights

Height to top of pivotal section: 224cm (7' 4") without rigging harness; 274cm (9') with rigging harness

All heights detailed are with adjustable mounting column extended

For more information on the GF-10
or to arrange a demonstration call **01895 457100**

